

Thursday, October 8, 2020 @ 12:00 PM CDT (1700 UTC)

The information contained in this email is going to numerous amateur radio nets, government and non-government agencies, as various amateur news outlets.

Looking at the latest satellite imagery, Hurricane Delta appears to be forming its first eyewall since becoming a hurricane. This indicates the storm is getting better organized and strengthening. NHC is already forecasting Delta to be a Cat 3 Hurricane later today. I would not be surprised at all if Delta intensified into a Cat 4 Hurricane once again. Two Hurricane Hunter Aircraft – a USAF C-130H Hercules, and a NOAA P-3 Orion – will be investigating Hurricane Delta later this afternoon, so we shall see.

We will activate this afternoon at 4:00 PM CDT (2100) UTC on both 14.325.00 MHz and 7.268.00 MHz. We will plan to operate for as long as 20-meters is open and will plan to suspend operations at 7:00 PM CDT (0000 UTC). The primary purpose of today's activation is to line-up reporting stations. Most of the affected area was hit last month by Hurricane Laura.

We will resume operations Friday morning at 7:00 AM EDT (1200 UTC) on 14.325.00 MHz. Operations on 7.268.00 MHz will resume at the conclusion of the Waterway Net. Once active, we will remain in full operation on both 20 and 40-meters through for as long as propagation permits – which will probably be somewhere around midnight CDT.

Key Messages from the Discussion package of Advisory 16 issued at 10:00 AM CDT (1500 UTC):

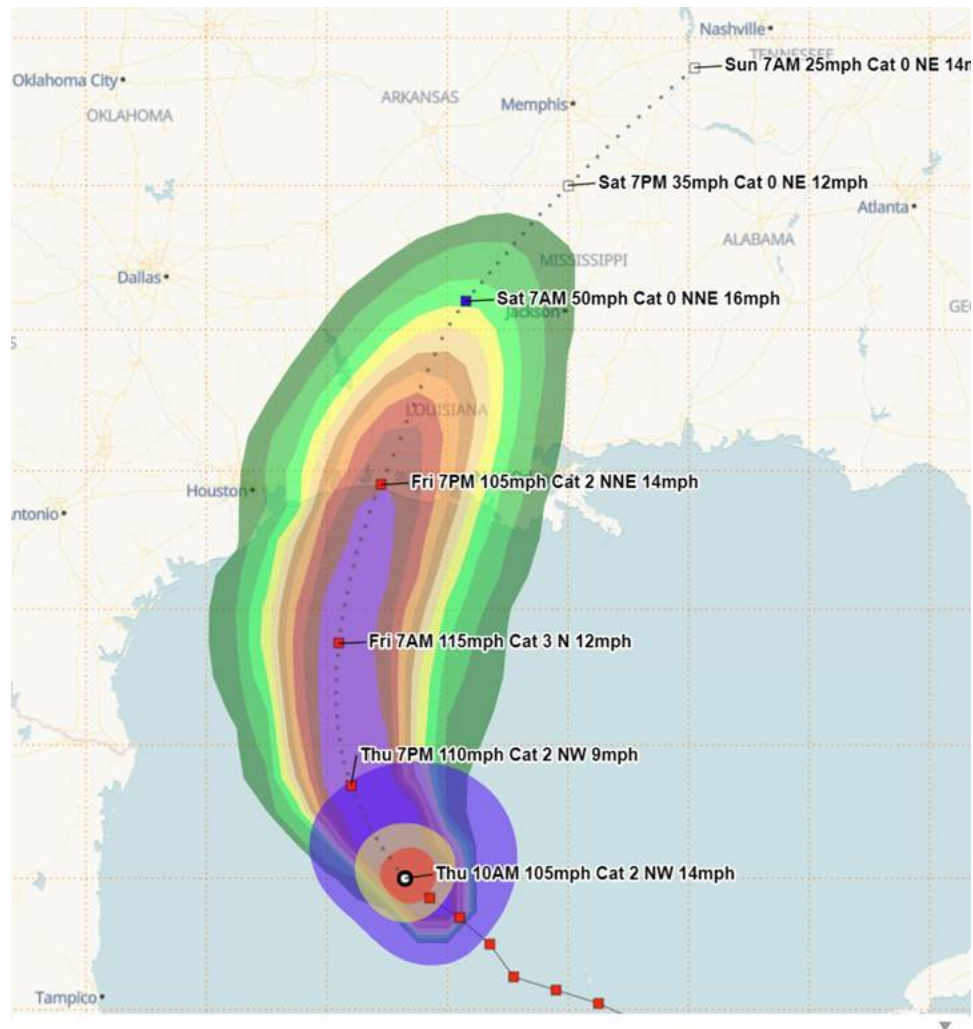
1. Life-threatening storm surge is expected near and east of where Delta makes landfall on Friday, and a Storm Surge Warning is in effect from High Island, Texas, to Ocean Springs, Mississippi. The highest inundation of 7 to 11 feet is expected somewhere between Rockefeller Wildlife Refuge and Port Fourchon, Louisiana. Residents in the warning area should promptly follow advice given by local officials. The storm surge risk remains high despite the forecast decrease in intensity before landfall since Delta is expected to grow in size.
2. Hurricane-force winds are expected Friday afternoon and evening somewhere within the Hurricane Warning area between High Island, Texas, and Morgan City, Louisiana. Hurricane-force winds will also spread inland across portions of southern Louisiana near the path of Deltas center Friday evening and Friday night.
3. Significant flash flooding and minor to moderate river flooding are likely in parts of Louisiana Friday and Saturday, with additional flooding in portions of the central Gulf Coast into the Lower Mississippi Valley.

As with any net activation, we request observed ground-truth data from those in the affected area (Wind Speed, Wind Gust, Wind Direction, Barometric Pressure – if available, Rainfall, Damage, and Storm Surge). Measured weather data is always appreciated but we do accept estimated.

We are also available to provide backup communications to official agencies such as Emergency Operations Centers, Red Cross officials, and Storm Shelters in the affected area. We will also be interested to collect and report significant damage assessment data back to FEMA officials stationed in the National Hurricane Center.

Hurricane Watch Net
Net Manager
www.hwn.org

~~~~~



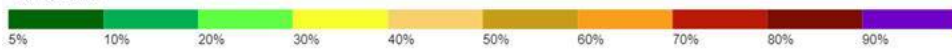
**HURRICANE DELTA - Thursday, October 8, 2020 10AM CDT Advisory #16**

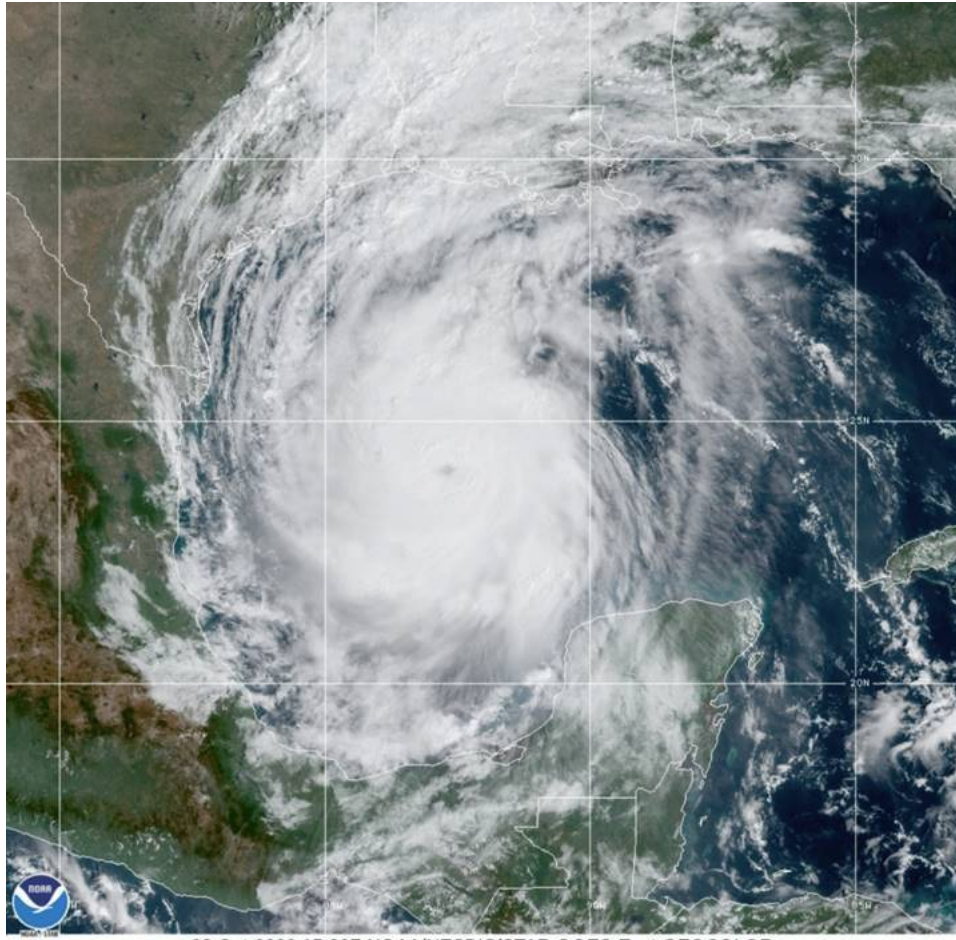
Center Location: 24.0 N 92.7 W Maximum Sustained Winds: 105 mph (Cat 2) Movement: 14 mph NW

Wind Field: at current location

Sustained Wind Speed: tropical storm  $\geq 34$ kt/39mph strong tropical storm  $\geq 50$ kt/58mph hurricane  $\geq 64$ kt/74mph

Strong Tropical Storm Wind Speed Probabilities for the 120 hours (5 days) from 7AM Thu 10/08/2020 to 7AM Tue 10/13/2020





08 Oct 2020 15:30Z NOAA/NESDIS/STAR GOES-East GEOCOLOR

